

AutoCount Internet User

1.0 What is AutoCount Internet User

AutoCount Internet User allows user to login into AutoCount Accounting through different network. It is something like AutoCount Network User, also controls the number of concurrent users logging into AutoCount Accounting.

Example: Jason and Julie would like to connect to their office's AutoCount Database from home (different network). They would then need to purchase an additional 2 Internet Users to do so.

It is an alternative solution for user to reach their AutoCount Database without the use of any 3rd party Remote Desktop Application, serving the same purpose and achieve what the user wants.

2.0 Setting up AutoCount Internet User

Assuming AutoCount Internet User had been purchased, setting up is the next thing to do. There are currently 2 known ways to setup Internet User to utilize them properly.

1. Connection through Port Forwarding.
2. Connection through Virtual Private Network (VPN).

2.1 Connection through Port Forwarding

This type of connection requires you to do some setting at Server-side router. However, every router interface and settings can be slightly difference so these steps that we are going through only serve as a reference purpose. The router that we used for this example is an Asus Router.

Setting up at Router (Server-side)

1. At the hosting server of AutoCount, click on Window Start Button, search for “cmd” and open the Command Prompt.
2. Type “ipconfig” and press enter.
3. You will be able to get your **Local IP Address** and **Default Gateway** from the result (Refer Figure 2.1.1).

```
Command Prompt
Microsoft Windows [Version 10.0.17763.379]
(c) 2018 Microsoft Corporation. All rights reserved.

C:\Users\>ipconfig

Windows IP Configuration

Ethernet adapter Ethernet:

    Connection-specific DNS Suffix  . : 
    Link-local IPv6 Address . . . . . : fe80::413b:2a62:e691:206d%11
    IPv4 Address. . . . . : 192.168.1.206
    Subnet Mask . . . . . : 255.255.255.0
    Default Gateway . . . . . : 192.168.1.1
```

Figure 2.1.1

4. Go to your web browser and type in the **Default Gateway: 192.168.1.1** (Refer Figure 2.1.2).

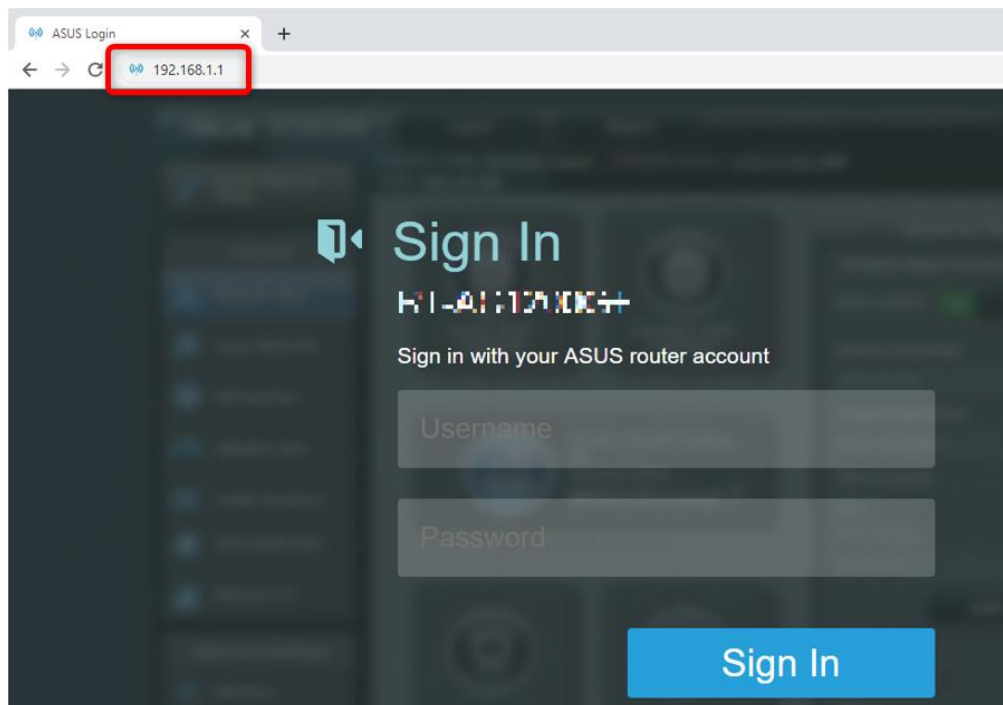


Figure 2.1.2

5. Key in your Username and Password. (If you do not know what's your default username and password is, you can find it from this website: <https://bestvpn.org/default-router-passwords/>)
6. Browse in the router for **WAN Setting → Port Forwarding** (Refer Figure 2.1.3 & 2.1.4).

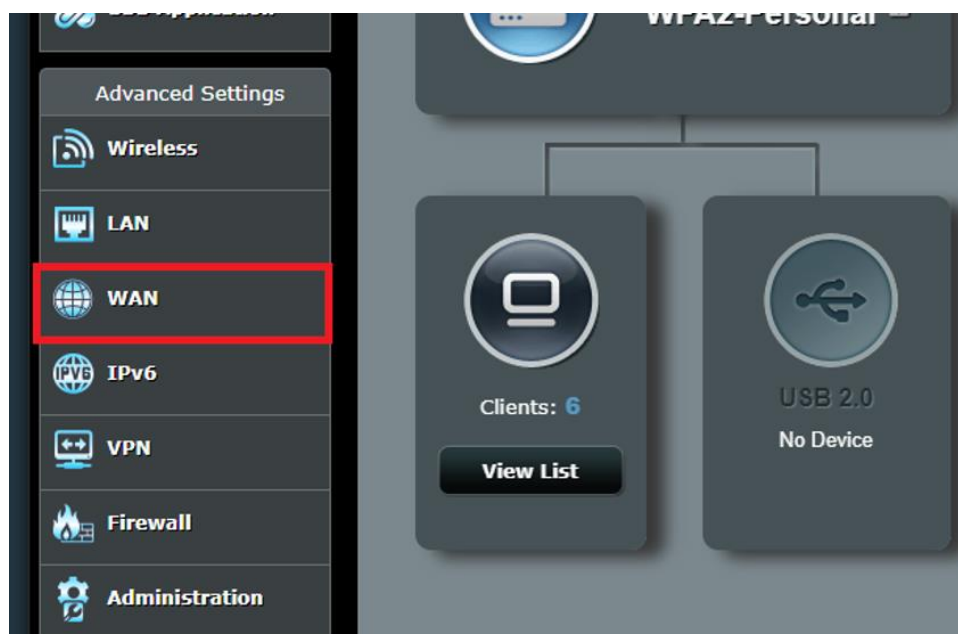


Figure 2.1.3

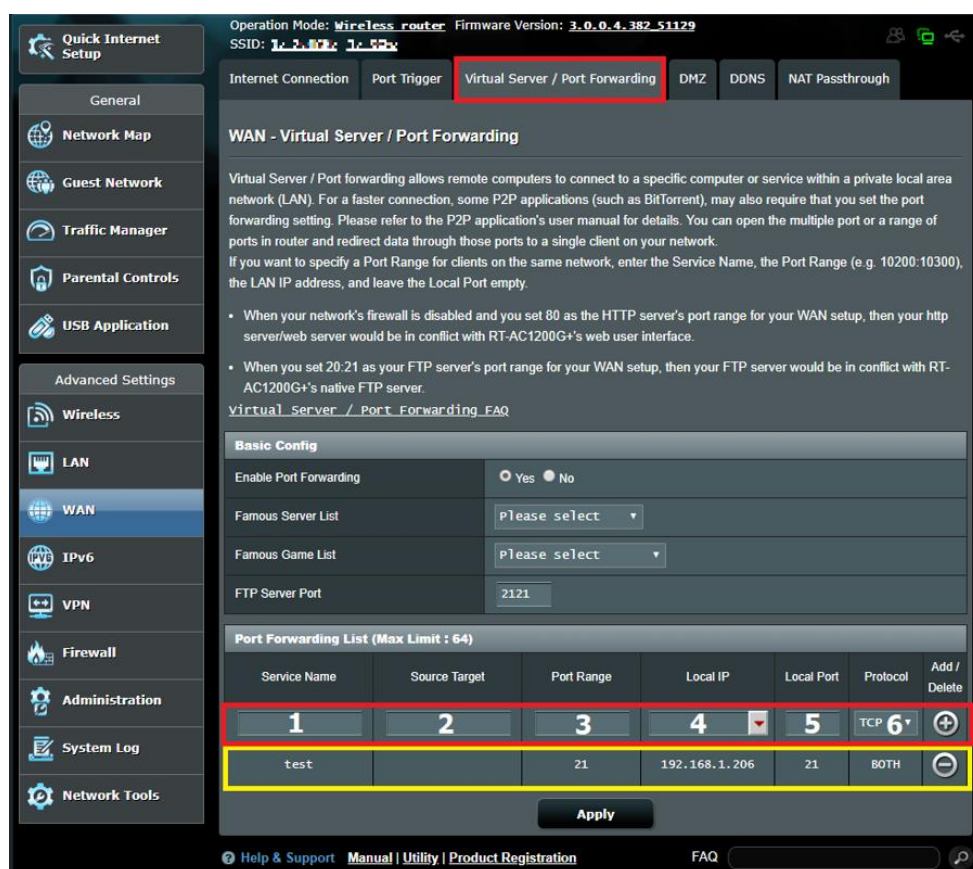


Figure 2.1.4

7. Setup Port Forwarding at the Port Forwarding List
 - i. **Service Name:** Define a name for this port forwarding record
 - ii. **Source Target:** Leave blank to auto detect or key in Client's PC Local IP (This may be different for each router)
 - iii. **Port Range:** Define a port from 1 to 65535, in this case we use 21
 - iv. **Local IP:** Define the IP Address of the PC that you want to port forward, in this case the server Local IP address – 192.168.1.206
 - v. **Local Port:** Open specific port for connection, in this case we use 21
 - vi. **Protocol:** Define Port type, TCP or UDP or Both, in this case we apply Both
8. Save and apply your settings. To check if your port is being block or not, you can go to <https://www.canyouseeme.org/> to get your Public IP Address and try on the port
9. If success, you can now attach AutoCount Database using the **Public IP Address** and **Port** from your client PC that is not within the same network (Refer Figure 2.1.5).

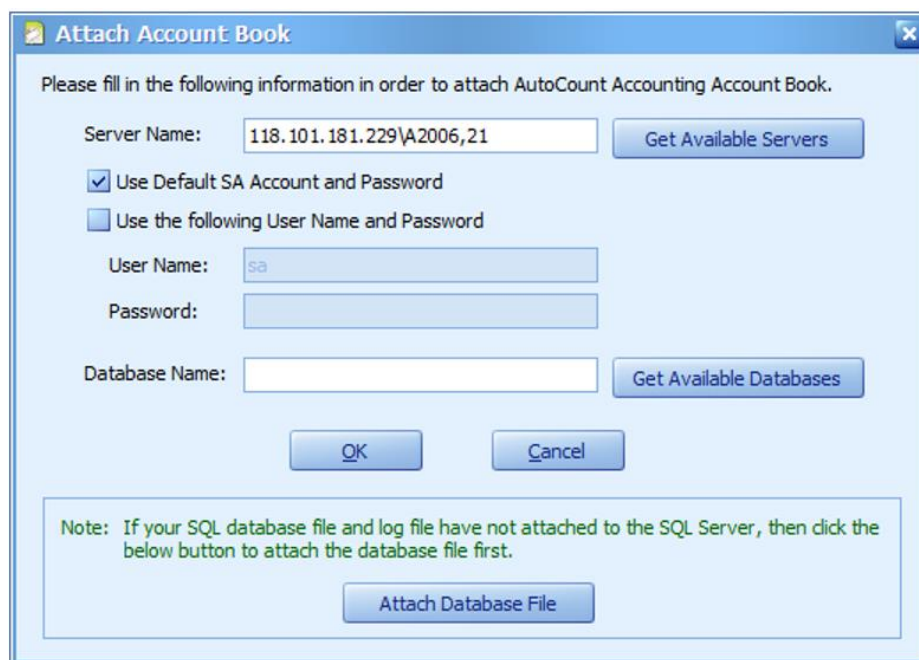


Figure 2.1.5

For detailed steps, may refer to: <https://www.asus.com/my/support/FAQ/114093/>

Note 1: Server Local IP Address must set to a fixed IP or IP will change and rules set in router will not apply.

Note 2: Public IP Address will change every time the router or modem is being restarted.

Note 3: This method is best for users that has a fixed Public IP Address, purchased from their Internet Service Provider.

2.2 Connection through Virtual Private Network (VPN)

This type of connection requires you to install VPN at both the server-PC as well as the client-PC. This is to create a virtual network between these 2 PC so that they can connect to each other. These steps to setup VPN only serve as a reference as different VPN might have to set differently. The VPN that we are using for example is **Hamachi**.

Setting up VPN

1. Download Hamachi from <https://www.vpn.net/>, run the installer and install Hamachi in both server-PC and client-PC (the PC that wants to connect).
2. After installation, it might require you to sign up or login to complete the installation process.
3. Alternatively, you can also attach your LogMeIn. At the LogMeIn Hamachi, go to top **Menu** → **System** → **Attach to LogMeIn Account...**
4. Key in your existing LogMeIn Account and click on the “**Attach**” button (Refer Figure 2.2.1 & 2.2.2).

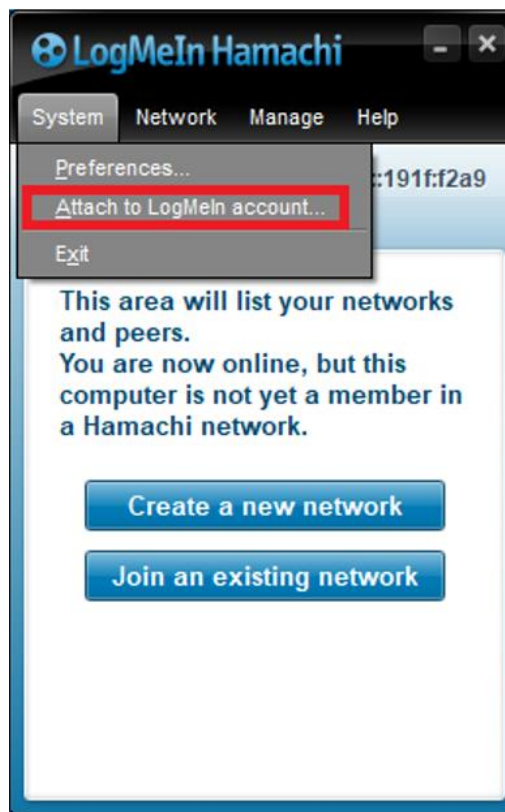


Figure 2.2.1

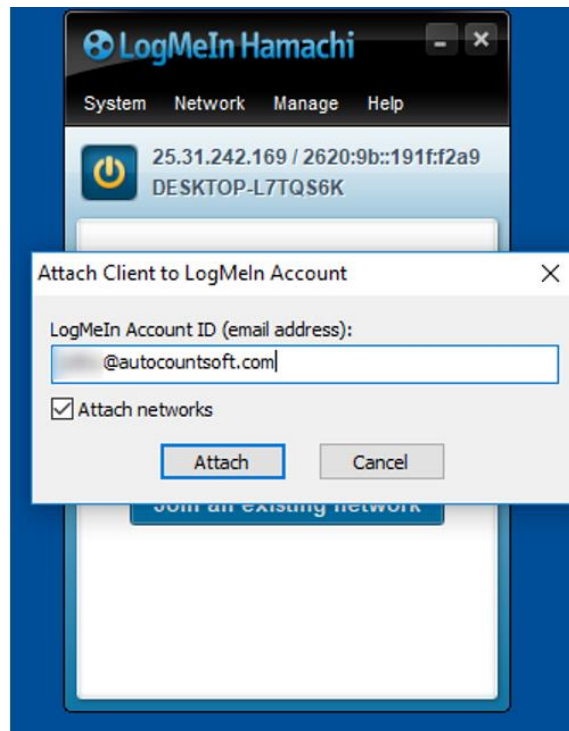


Figure 2.2.2

5. After attach your LogMeIn Account, you will need to login into your Hamachi account from browser.
6. Go to **My Network** menu on your left. You will able to see **"You have 1 pending join request"** (Refer Figure 2.2.3).
7. Click on it and **Accept** the request (Refer Figure 2.2.3).

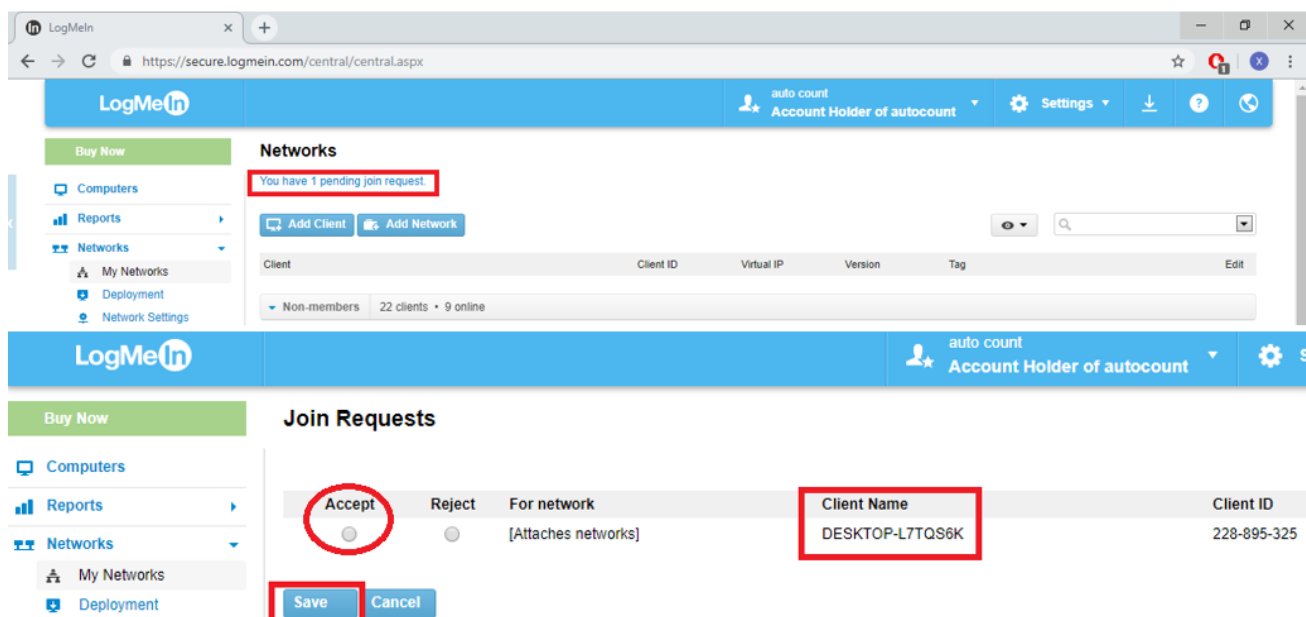


Figure 2.2.3

8. After accepting, go back to your Hamachi program. You can now Create or Join a network.
9. Before that, some brief explanation of the buttons available on Hamachi (Refer Figure 2.2.4).
 - i. On / Off button.
 - ii. **Create a new Network:** Allows user to create a new virtual network.
 - iii. **Join an existing network:** Allows user to join a virtual network.
 - iv. Hamachi Local IP Address.

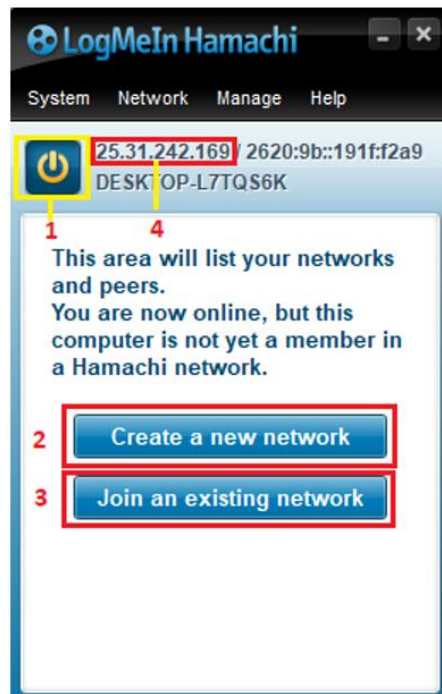


Figure 2.2.4

10. Now, create a new network from server PC (Refer Figure 2.2.5).
 - i. **Network ID:** Define a name for this network.
 - ii. **Password:** Define a password for this network. Will be required for another machine if wish to connect into this network.
 - iii. **Confirm Password:** Reconfirm the password.

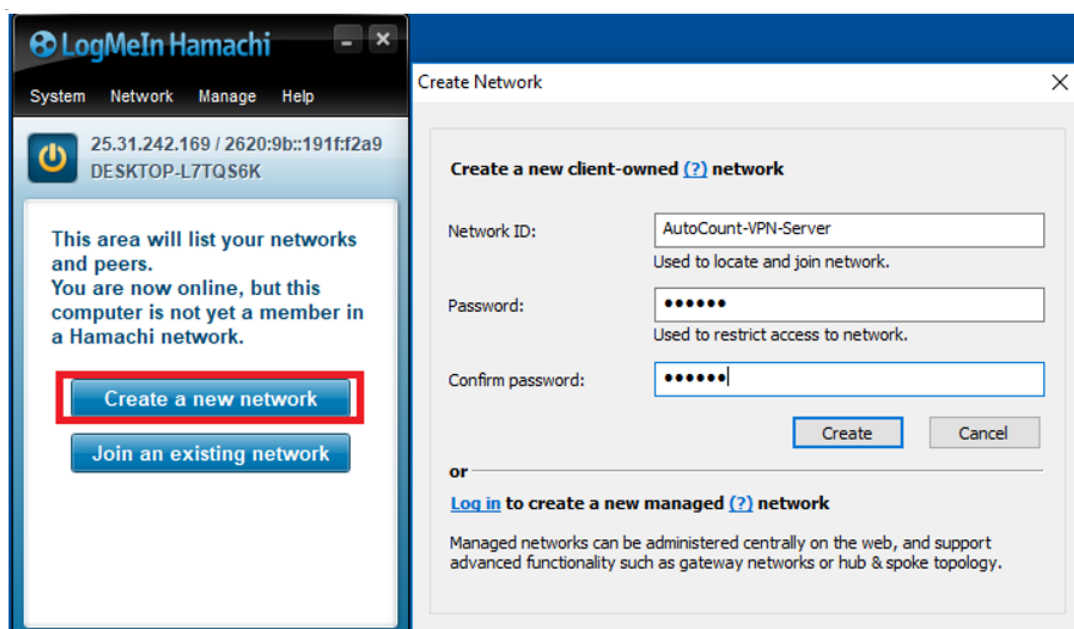


Figure 2.2.5

11. After that, join network from client PC (Refer Figure 2.2.6)

- i. **Network ID:** Key in the network name to join.
- ii. **Password:** Key in the password of that network.

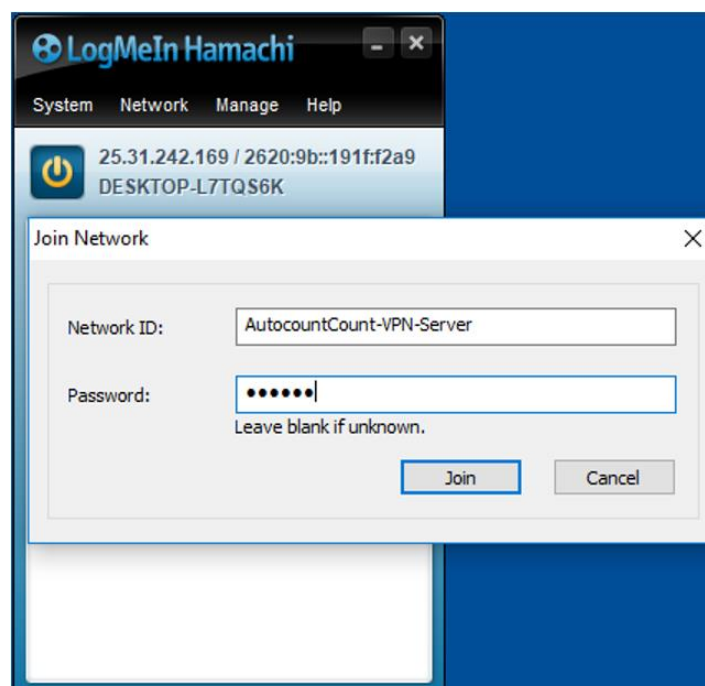


Figure 2.2.6

12. Make sure that both the machine able to detect **green** light from the Hamachi program. It means that both PC can be connected against each other (Refer Figure 2.2.7)

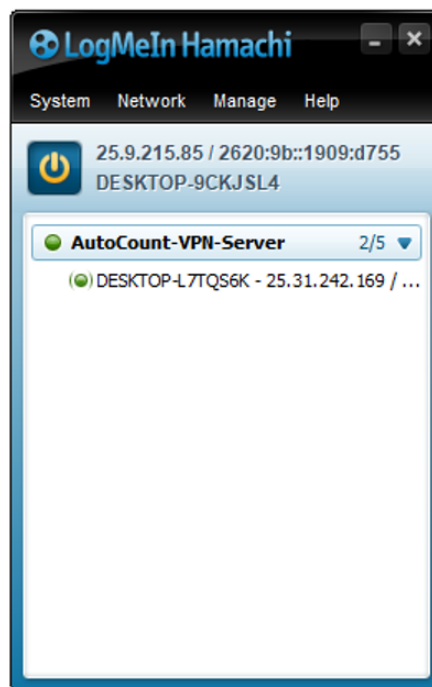


Figure 2.2.7

13. You can now attach AutoCount Database from the client PC using Hamachi Local IP Address, **25.31.242.169** (Refer Figure 2.2.8). If user wish to attach using port number instead of name instance A2006 (Refer Figure 2.2.9), can refer to the following link on how to check SQL Port No:
<https://wiki.autocountsoft.com/wiki/Others: SQL - How to check SQL Port No>

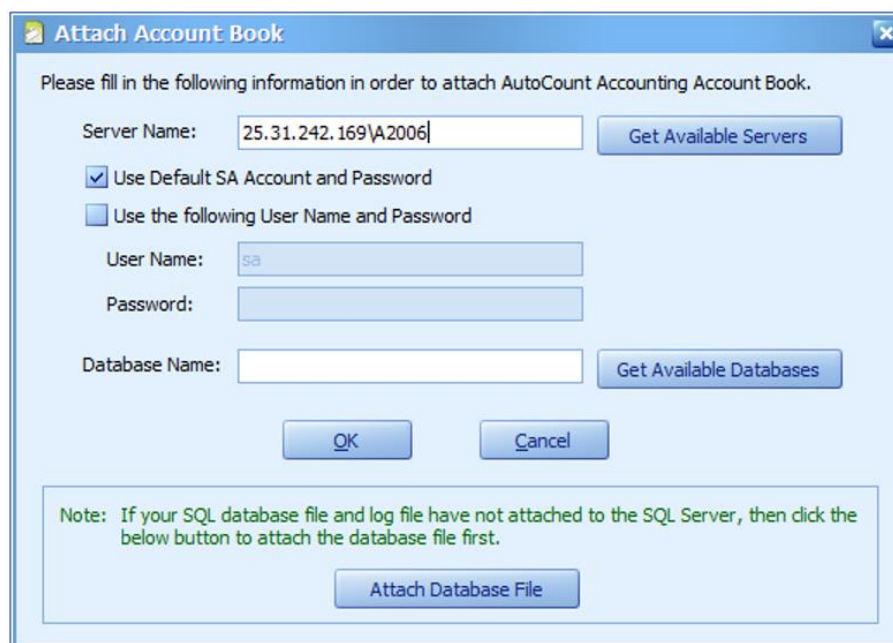


Figure 2.2.8



Attach Account Book

Please fill in the following information in order to attach AutoCount Accounting Account Book.

Server Name:

☒ Use Default SA Account and Password
☐ Use the following User Name and Password

User Name:

Password:

Database Name:

Note: If your SQL database file and log file have not attached to the SQL Server, then click the below button to attach the database file first.

Figure 2.2.9

3.0 Access Right at AutoCount Accounting

To login from a different network, other than using AutoCount Internet User, the user must have access right to login through Internet. Please assign access right to the user ID for the following access right record.

Version 1.9: Top Menu General Maintenance → User Maintenance → Access Right → AutoCount Accounting → System → Security → Can Login from Internet.

Version 2.0: Top Menu General Maintenance → Access Right Maintenance → AutoCount Accounting → System → Security → Can Login from Internet.

Access Rights Maintenance ?

Search

Compare

Expand All

Description	Users & Groups
[-] AutoCount Accounting	
[-] General Ledger	
[-] Account Receivable	
[-] Account Payable	
[-] Invoicing	
[-] Stock	
[-] Manufacturing	
[-] Business Flow	
[-] General Maintenance	
[-] Tools	
[-] Tax	
[-] System	
[-] Manage Account Book	
[-] Behaviors	
[-] Security	
Always Logout when exit the program	ACCOUNTS, ADMINS, FINANCEMGR, INVMGR, PURCHASES, SALES, STOCKS
Show Set Password	ADMINS
Can Login from Internet	ADMINS
[-] Remote Credit Control	
[-] Credit Control	
[-] Inquiry	
[-] Main Page	
[-] Notification	
[-] Import and Export	

Set Access Rights

- ☐ ACCOUNTS
- ☒ ADMINS
- ☐ FINANCEMGR
- ☐ INVMGR
- ☐ PURCHASES
- ☐ SALES
- ☐ STOCKS
- ☐ ADMIN
- ☐ AOTG

Figure 3.0.1

Prepared by Jia Zheng

Last Modified 18th March 2020